



Interested? More information here:



<https://psychologie.uni-greifswald.de/en/430>

## Chair of Cognitive Psychology Cognitive Control Lab

Department Head: Prof. Dr. Rico Fischer

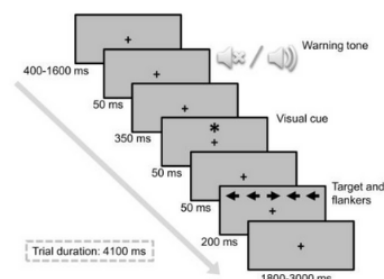
### Team

**Amelie Jung, M.Sc.**

[amelie.jung@uni-greifswald.de](mailto:amelie.jung@uni-greifswald.de)

Assessing time-on-task changes in cognitive control and vigilance components in a dual task

- vigilance and control parameters
- adaption from ANTI-Vea (Luna et al., 2021)
- drafting and adaption of paradigms, data collection and analyses



**Devu Mahesan, PhD**

[devu.mahesan@uni-greifswald.de](mailto:devu.mahesan@uni-greifswald.de)

Studying the influence of surprise in dual-task processing

- Adaptation of dual-task paradigm, programming and data analysis

Studying the neural mechanisms of inhibition in dual-task

- EEG, paradigm testing, data collection, data analysis and more

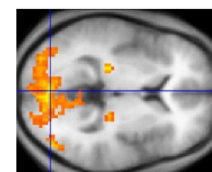


**Leonardo Caisachana Guevara, M.Sc.**

[leonardo.caisachanaguevara@uni-greifswald.de](mailto:leonardo.caisachanaguevara@uni-greifswald.de)

MeMoSlap Research Group

- fMRI, neuropsychological testing, brain stimulation, data analysis and more
- possibility for a thesis on cognitive control

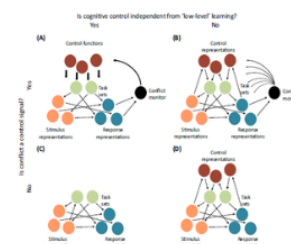


**Shu Yang, M.A.**

[shu.yang@uni-greifswald.de](mailto:shu.yang@uni-greifswald.de)

The Flexibility of Control Adaptations

- focus on list-wide proportion congruency (LWPC) and context-specific proportion congruency (CSPS) paradigms
- programming in Python and R



**Sandra Lange, M.Sc.**

[sandra.lange@uni-greifswald.de](mailto:sandra.lange@uni-greifswald.de)

Describing the Process of Informed Decision-Making during Patient Education

- Impact of Doctor's Recommendations on Informed Decisions
- Impact of Doctor Recommendations on Risk Perception
- Factors influencing Risk Perception
- Cognitive Load in Patient Education



**and more....!**

**Application open for theses and internships. If interested, contact via email.**